



BEVERAGE STATION™

PRO-LINE™ 79" - 12 KEG / 8 FAUCET

- Designed to dispense an array of beverages, at their perfect temperature including red and white wine, beer and cocktails.
- Metropolis™ H tower with 8 faucets, drip tray.
- Front breathing for cooling and exhaust.



MBB78BC-E-A

Black



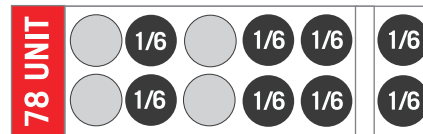
Two (2) Zone, Dual-Temperature:

Built-in digital thermostats allow for custom temperature settings based on your preference.

FOR EXAMPLE:

Cold Side: Beer, white wine, cocktails @ 36°F

Warm Side: Red wine @ 45° - 70°F



SPACE FOR:
8 TAPPED KEGS
+ 4 BACK UP KEGS

Keg footprint example



Listed by Edison Testing Laboratories.
Conforms to UL & NSF Standards.

| Part No. | Exterior Finish | Faucets | Doors | Door Type | Shipping Weight |
|--------------------------------------|-----------------|---------|-------|-----------|-------------------|
| <input type="checkbox"/> MBB78BC-E-A | Black | 8 | 3 | Solid | 184 kg 407 lbs |

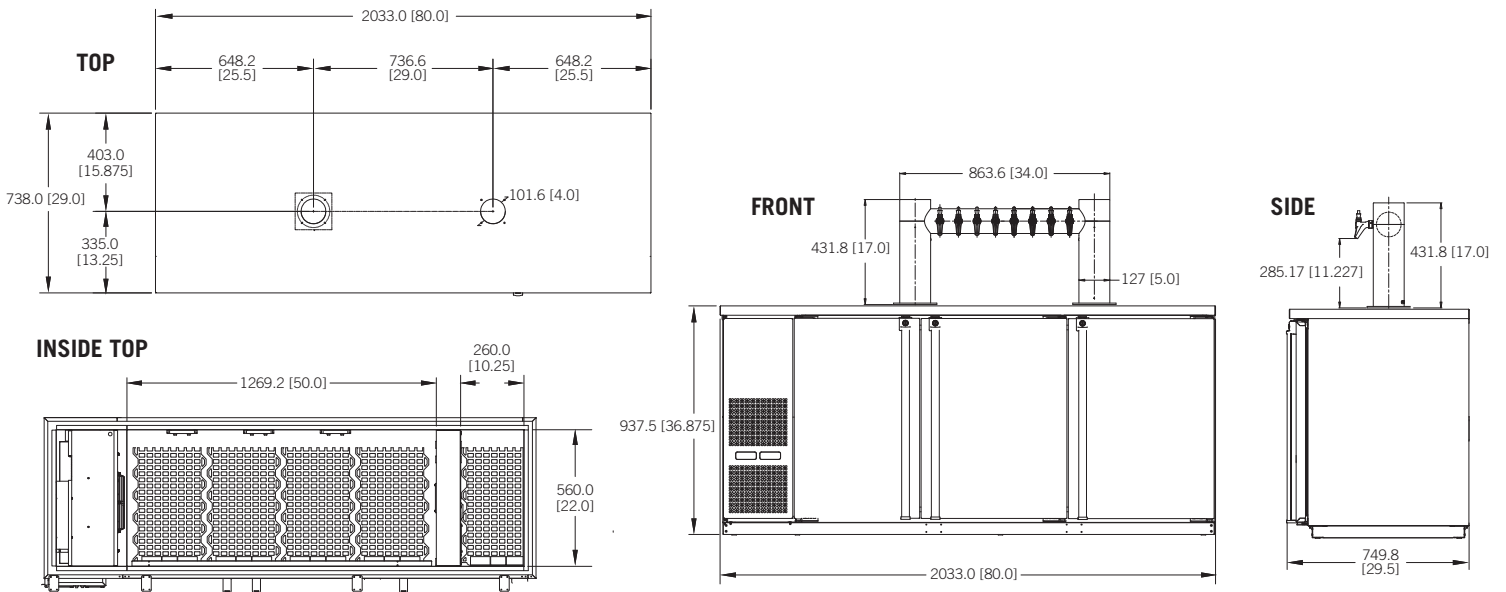
Operating Performance

| | | | |
|--|------------------------------------|----------------------------------|---------------------|
| Keg Capacity - Cold Side | 10 1/6 slim barrels | Running Amps | 3.0 |
| Keg Capacity - Warm Side | 2 1/6 slim barrels | Voltage | 115/60/1 |
| Color-coded Digital Thermostats | 2 (Blue LED-Whites & Red LED-Reds) | Plug Type | NEMA-5-15P |
| Temperature Range - Cold Side | 32-70°F (0 - 21.1°C) | Cord Length | 8' |
| Temperature Range - Warm Side | 40-70°F (4.4 - 21.1°C) | Refrigerant | R290 |
| Approval | ETL Listed | Charge oz | 4.9 |
| Compressor HP | 1/3 | Working High/Low Pressure | 300 psig / 150 psig |

| | |
|--------------------|--|
| Exterior | 18 gauge stainless steel top, 22 gauge solid doors, 24 gauge steel front, sides and back, black vinyl |
| Interior | 20 gauge stainless steel floor and walls |
| Ventilation | Front ventilated |
| Plumbing | Automatic condensate evaporator, no drain connection required. Evaporator condensate has been plumbed to a condensate pan located in the compressor housing. |
| Insulation | Foamed-in-place using high density, CFC-free polyurethane; 2" top, walls and floor |
| Accessories | Casters or 6" fixed legs (order separately) |

Dimensions

Installation Note: This tower has 7" diameter flanges and requires new mounting holes be drilled.



 **MICRO MATIC**
 Toll-Free: 1-866-327-4159
www.micromatic.com

West
 19791 Bahama St.
 Northridge, CA 91324
 Tel. (818) 701-9765
 Fax. (818) 701-9844

Central
 10726 North Second St.
 Machesney Park, IL 61115
 Tel. (815) 968-7557
 Fax. (815) 968-0363

Southeast
 2386 Simon Ct.
 Brooksville, FL 34604
 Tel. (352) 799-6331
 Fax. (352) 796-2429

Northeast
 4601 Saucon Creek Rd.
 Center Valley, PA 18034
 Tel. (610) 625-4464
 Fax. (610) 625-4466