



DRAFT TOWER


KRONOS - 8 FAUCET WITH GLASS RINSER


- Maximize bar top space with convenient wall mounting
- All-in-one design: draft tower and drip tray
- Exterior finish will provide years of durable service
- All stainless steel contact with the beer for the ultimate in draft purity



KRONOS-8SSKRGR
Brushed Stainless Steel

Faucet knobs not included.


 Certified by the National Sanitation Foundation

 The integrated Kool-Rite module provides optimum cooling at the point of dispense. The module construction makes the installation process as simple as PLUG "N" POUR.

www.micromatic.com • 1 (866) 327-4159

KRONOS - 8 FAUCET

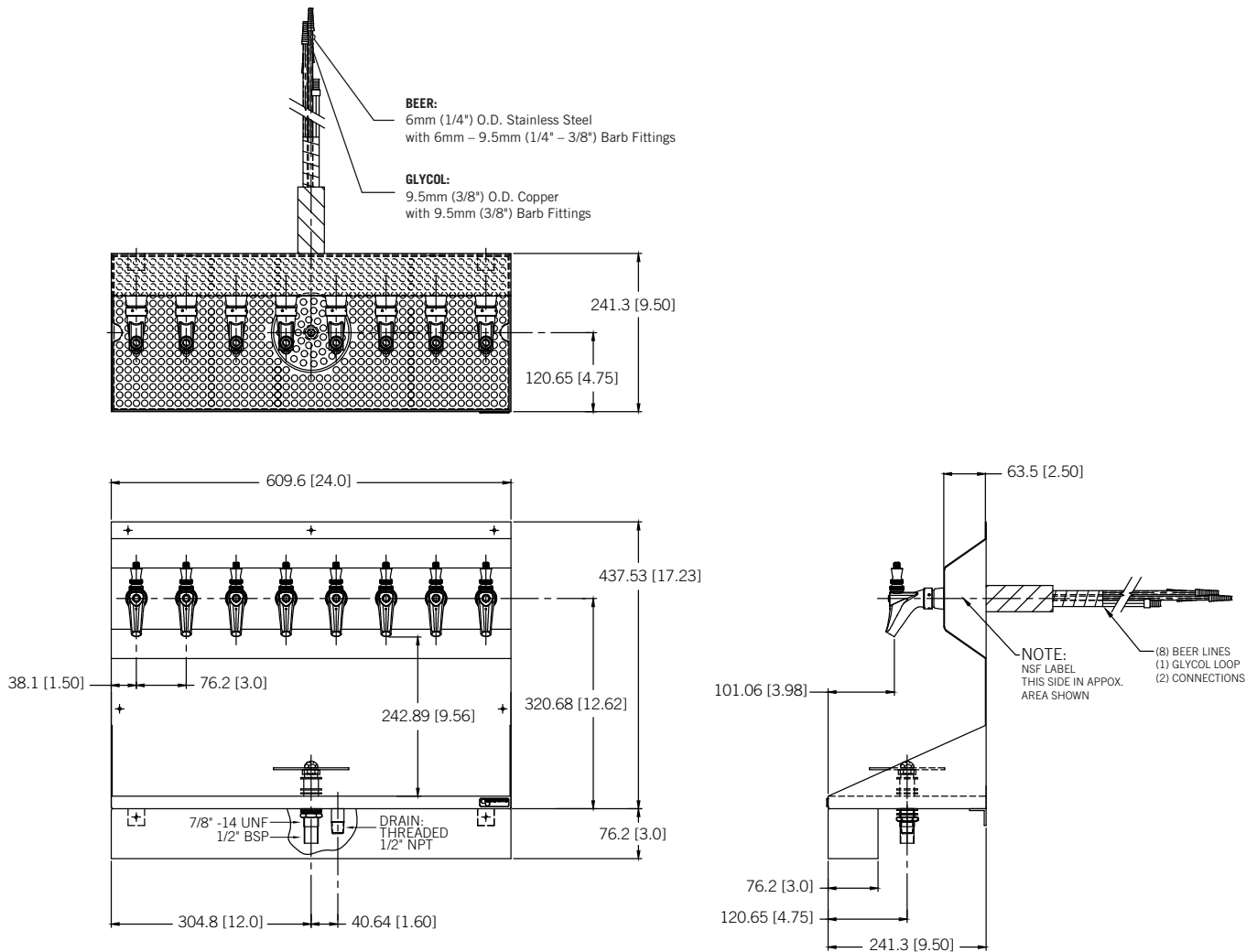
Job Number: _____ Location: _____

Part No.	Faucets	Finish	Dispense System	Shipping Weight
 KRONOS-8SSKRGR	8	Brushed Stainless Steel	Kool-Rite (Glycol)	23 kg 51 lbs

Rinser Water Inlet Installation

- Always check local plumbing codes first.
- Install in-line water regulator set at 15 PSI from the street water supply (no greater, perfect operating pressure).
- Install in-line one way check valve from the street water supply (prevents pressure drop which can cause leaking).
- Install in-line shutoff for the rinser system from the street water supply (this must be turned off nightly).
- If teed into soda system make sure system can handle the increased water demand. Have plumber install a 45° 1/2" O.D. barb for the drains if line is not hard plumbed into the system.
- Install a shutoff for the rinser water supply if line is not hard plumbed into the system.

Dimensions



 **MICRO MATIC**
Toll-Free: 1-866-327-4159
www.micromatic.com

West
19791 Bahama St.
Northridge, CA 91324
Tel. (818) 701-9765
Fax. (818) 701-9844

Central
10726 North Second St.
Machesney Park, IL 61115
Tel. (815) 968-7557
Fax. (815) 968-0363

Southeast
15111 Dispense Ln.
Brooksville, FL 34604
Tel. (352) 799-6331
Fax. (352) 796-2429

Northeast
4601 Saucon Creek Rd.
Center Valley, PA 18034
Tel. (610) 625-4464
Fax. (610) 625-4466